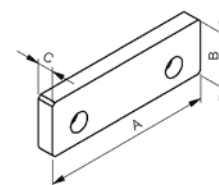


## STANDARD jaws

### PLAIN



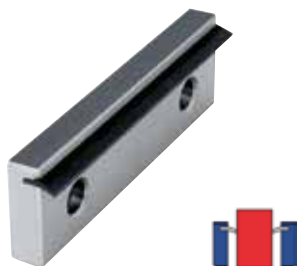
- > Standard Jaw.
- > Universal clamping.
- > Material: Hardened steel.



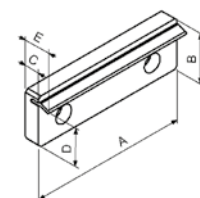
Code	900 360 090	900 360 125	900 360 160	900 360 200
Width (A)	90	125	160	200
B	39,5	39,5	49,5	62,5
C	12	12	16	20

Set supplied: 1 jaw with bolts.

### HOLD DOWN JAW



- > Designed for achieving a descendant clamping pull down jaws.
- > Interchangeable spirals.
- > Material: Steel with steel spring.



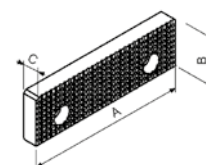
Code	900 361 090	900 361 125	900 361 160	900 361 200
Width (A)	90	125	160	200
B	39,5	39,5	49,5	62,5
C	12	12	16	20
D	32	32	41	53
E	21	21	23	27

Set supplied: 1 jaw with bolts.

### SERRATED



- > Designed in order to add gripping power.
- > A safer clamping.
- > Material: Hardened steel.



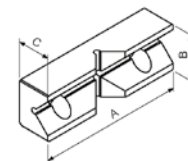
Code	900 362 090	900 362 125	900 362 160	900 362 200
Width (A)	90	125	160	200
B	39,5	39,5	49,5	62,5
C	12	12	16	20

Set supplied: 1 jaw with bolts.

### PRISMATIC



- > Specially designed for round workpieces.
- > Material: Hardened steel.



Code	900 363 090	900 366 125	900 363 160	900 363 200
Width (A)	90	125	160	200
B	39,5	39,5	49,5	62,5
C	28	28	33	48
∅	13 - 40	13 - 40	16 - 50	20 - 64

Set supplied: 1 jaw with bolts.

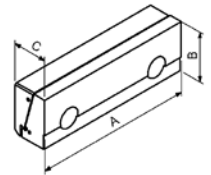
## STANDARD jaws

### PRECISION JAW



Set supplied: 1 jaw with bolts.

- > Designed for a descendant and safe clamping.
- > Universal clamping.
- > Material: Hardened steel.



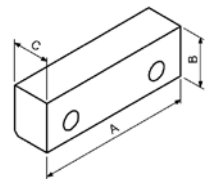
Code	900 364 125	900 364 160	900 364 200
Width (A)	125	160	200
B	39,5	49,5	62,5
C	27	30	33

### SOFT JAW



Set supplied: 1 jaw with bolts.

- > Machinable jaws.
- > Can be hardened for special geometry parts.
- > Material: 1140F (C45).



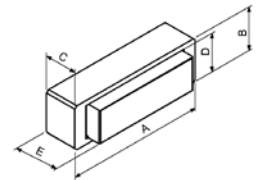
Code	901 360 090	901 360 125	901 360 160	901 360 200
Width (A)	90	125	160	200
B	39,5	39,5	49,5	62,5
C	30	30	40	40

### PENDULAR JAW



Set supplied: 1 jaw with bolts.

- > Designed for clamping non parallel work pieces.
- > They compensate the unevenness of the faces.
- > Material: Hardened steel.



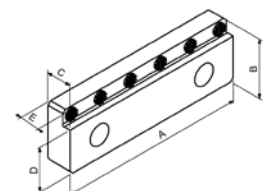
Code	800 366 090	800 366 125	800 366 160	800 366 200
Width (A)	90	125	160	200
B	39,5	39,5	49,5	62,5
C	26,5	29,5	39,5	44,5
D	35	35	45	55,5
E	34,5	41,5	53,5	58,5
$\alpha$	10°	10°	9°	8°

### INSERTS



Set supplied: 1 jaw with bolts.

- > Designed for increasing aggressiveness in clamping.
- > It consists of interchangeable inserts.
- > It has a step to avoid cales or parallels.
- > Material: Hardened steel.



Code	801 364 090	801 364 125	801 364 160	801 364 200
Width (A)	90	125	160	200
B	39,5	39,5	49,5	62,5
C	17	17	17	19,5
D	29,5	29,5	39,5	50,5
E	13	13	13	13
N° Inserts	4	6	7	8

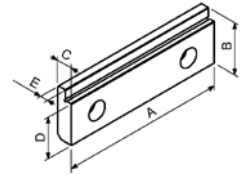
## STANDARD jaws

### STEPPED



Set supplied: 1 jaw with bolts.

- > Designed to clamp plates avoiding cales or parallel jaws.
- > Material: Hardened steel.



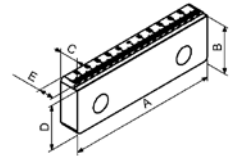
Code	901 362 090	901 362 125	901 362 160	901 362 200
Width (A)	90	125	160	200
B	39,5	39,5	49,5	62,5
C	12	12	16	20
D	33,5	31,5	41,5	52,5
E	9	7	11	14

### CLAW SERRATED



Set supplied: 1 jaw with bolts.

- > Designed to achieve a more aggressive clamping.
- > Jaws get the most out of the material.
- > Material: Hardened steel.



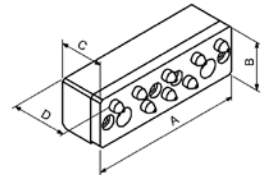
Code	901 365 090	901 365 125	901 365 160	901 365 200
Width (A)	90	125	160	200
B	39,5	39,5	49,5	62,5
C	14	16	18	20
D	37	37	47	60
E	11	13	15	17

### HYDRAULIC



Set supplied: 1 jaw with bolts.

- > Designed for clamping uneven work pieces without parallel faces.
- > They consist of pins which compensate themselves with through an oil chamber.
- > Material: Hardened steel.



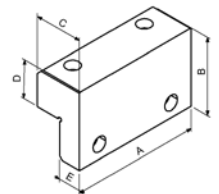
Code	800 365 125	800 365 160	800 365 200
Width (A)	125	160	200
B	39,5	49,5	62,5
C	36	36	40
D	45,5	45,5	46,5
Nº embolos	8	12	22

### HIGH PLAIN JAW FOR MAT AND CLASSIC



Set supplied: 1 jaw with bolts.

- > Design for clamping bigger worpieces than the height of the standard jaws.
- > Material: Hardened steel.



Code	901 361 125	901 361 160	901 361 200
Width (A)	125	160	200
B	75,5	95,5	109,5
C	47	47	70
D	37	37	48
E	14,5	19,5	24,5