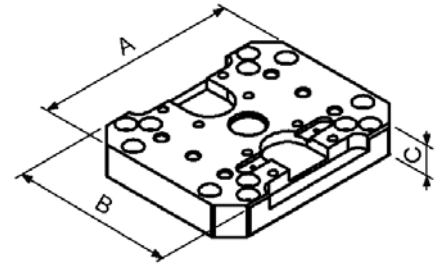


DUO

DUO MAT



- > Support structure for two back to back vices.
- > Vices should be clamped one into the other as well as to the base plate.
- > Specially designed for horizontal machining centers.
- > Contains the necessary elements for aligning and assembling two vices.
- > With special drain for coolant and chip evacuation.



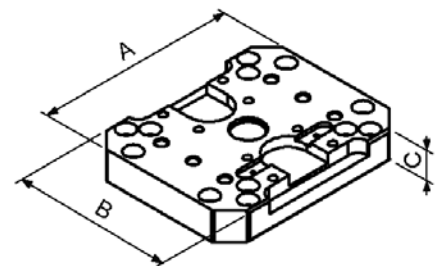
Base plate	890 010 090	890 010 125	890 010 160	890 010 200
A	236	290	360	440
B	236	234	300	320
C	45	45	45	45
Weight (kg)	19	23	40	51

Do not include vices.
Set supplied: Structure and clamping elements.

DUO TWIN



- > Support structure for two back to back vices.
- > Vices should be clamped one into the other as well as to the base plate.
- > Specially designed for horizontal machining centers.
- > Contains the necessary elements for aligning and assembling two vices.
- > With special drain for coolant and chip evacuation.



Base plate	890014090	890014125
A	236	290
B	236	234
C	45	45
Weight (kg)	19	24

Do not include vices.
Set supplied: Structure and clamping elements.

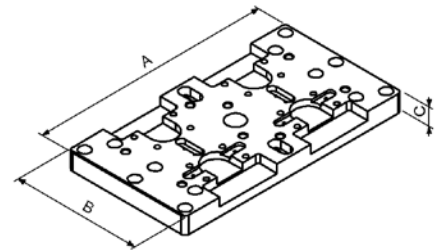
STRUCTURES

DOUBLE DUO

DOUBLE DUO MAT



- > Support structure for four back to back vices.
- > Vices should be clamped one into the other as well as to the base plate.
- > Specially designed for horizontal machining centers.
- > Contains the necessary elements for aligning and assembling two vices.
- > With special drain for coolant and chip evacuation.



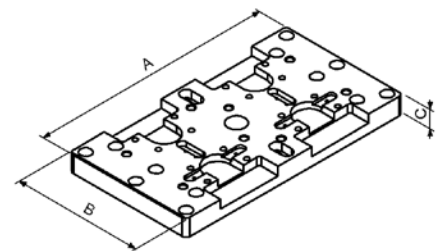
Do not include vices.
Set supplied: Structure and clamping elements.

Base plate	890 020 090	890 020 125	890 020 160	890 020 200
A	410	540	556	620
B	220	290	310	336
C	42	42	42	42
Weight (kg)	31	51	63	75

DOUBLE DUO TWIN



- > Support structure for four back to back vices.
- > Vices should be clamped one into the other as well as to the base plate.
- > Specially designed for horizontal machining centers.
- > Contains the necessary elements for aligning and assembling two vices.
- > With special drain for coolant and chip evacuation.



Do not include vices.
Set supplied: Structure and clamping elements.

Base plate	890 024 090	890 024 125
A	410	540
B	220	290
C	42	42
Weight (kg)	31	53

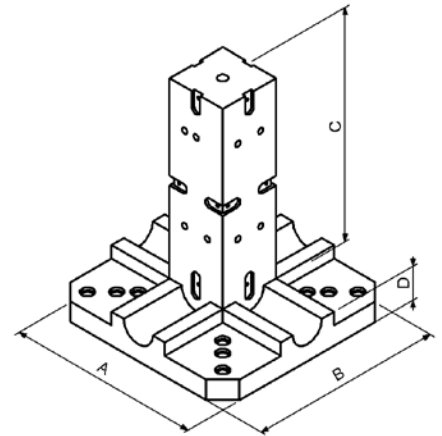
4x90° Tombstone

TOMBSTONE MAT 4x90°



Do not include vices.
Set supplied: Structure and clamping elements.

- > One-piece structure to support four vices placed at 90 degrees.
- > Vices are fastened and aligned on the central hub.
- > With special drain for coolant and chip evacuation.
- > Contains the necessary elements for aligning and assembling four vices.
- > Material: Ductile iron for stability in time and for absorbing vibration during the machining.



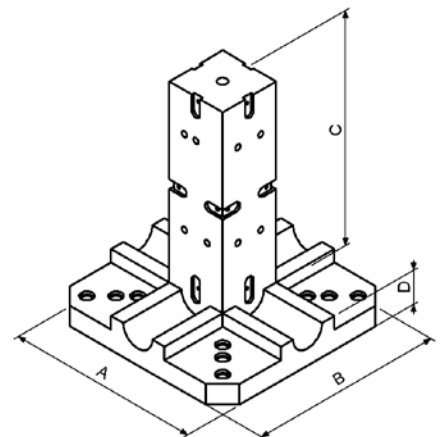
Base plate	890 030 090	890 030 125	890 030 160	890 030 200
A	400	400	500	547
B	400	400	500	547
C	370	480	640	640
D	70	70	70	70
Weight (kg)	80	110	193	259

TOMBSTONE TWIN 4x90°



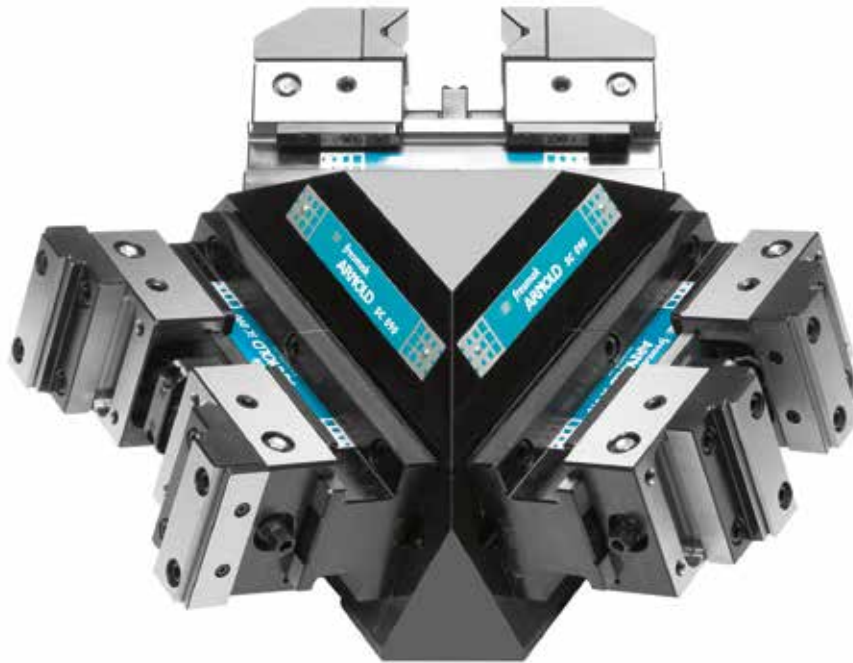
Do not include vices.
Set supplied: Structure and clamping elements.

- > One-piece structure to support four vices placed at 90 degrees.
- > Vices are fastened and aligned on the central hub.
- > With special drain for coolant and chip evacuation.
- > Contains the necessary elements for aligning and assembling four vices.
- > Material: Ductile iron for stability in time and for absorbing vibration during the machining.



Placa base	890 034 090	890 034 125
A	400	400
B	400	400
C	470	550
D	70	70
Weight (kg)	86	116

SC Pyramid



- > Structure for placing three SC vices in five axes machines.
- > Designed for reaching angles that cannot be accessed with a regular setup.
- > Material: Steel.

Width	Code
090	890 040 090
125	890 040 125

Do not include vices.

Set supplied: Structure and clamping elements.